

“The Abbotsford Community Foundation is one of the best ways to give; it’s strong and it’s living, it’s alive and active!”

– Vivian Trethewey

GIVING GUIDE



ABBOTSFORD
COMMUNITY
FOUNDATION

Inspire • Impact • Invest

Why Give?

Reasons to Give Are Unique to Each Donor – To You

Donors generally view giving as a way to give back to recognize how much they have received in life. Many give to ensure their community is supported with greater opportunities. Some have a deep personal connection to a cause or an issue needing solutions. Most donate simply to make a difference.

Meaning is found in supporting the arts, the environment, education, youth, and reducing poverty, which creates greater opportunities for others to succeed.

No matter what the reason, no matter how small or large the gift, a legacy will exist for the donor and the recipient.

Abbotsford Community Foundation provides inspiring and impactful giving options for your investment in your local community. Your specific values, interests and intentions are supported by us as your charity for charities.

“ I would just like to think I passed through this era, this world, and hopefully made something a little better for the average person.”

– Mayor George Ferguson (on how he would like to be remembered)



The Community Foundation Advantage

We serve Abbotsford by connecting donors with causes that matter to them. Together, we build, invest and manage the gifts we have been given, for the long-term vitality of our community.

Because donations are pooled and invested, with the annual earnings being reinvested into Abbotsford, your gifts to the Abbotsford Community Foundation continue to make an impact for years to come.

Why Give Through the Abbotsford Community Foundation?

1. We are a **local organization** with deep roots in Abbotsford.
2. Our funds help you **invest in the causes that you care about most**.
3. We **multiply the impact of your generosity** by pooling your gift with others to maximize our grant pool.
4. We provide a **highly personalized service**, tailored to your charitable and financial interest.
5. Our staff and volunteers have **broad expertise** regarding Abbotsford's needs and challenges.
6. We can accept a **wide variety of assets** and gift types.
7. We **partner with professional advisors** to create effective approaches to your charitable giving.
8. We build endowment funds that will **benefit our community forever and help create personal legacies**.
9. We offer the **maximum tax advantage** for most gifts under federal law.
10. We are a **community leader**, fostering collaboration on issues of broad interest to create positive change.

Our History

The Abbotsford Community Foundation started with a substantial donation by the Trethewey family to the Matsqui Parks and Recreation Commission in 1978.

The Directors of the Commission felt that the donation could have a much longer effect on the community if it was invested in perpetuity and revenues from the investment spent annually.

With the help of community-minded businesses and individuals like you, we've been growing endowments and giving back to where we live since 1979.

“

I continue to give to the Foundation because I believe in what they do and they do it well.”

– Vivian Trethewey



We Grow Your Trust

The Power of Investing Locally

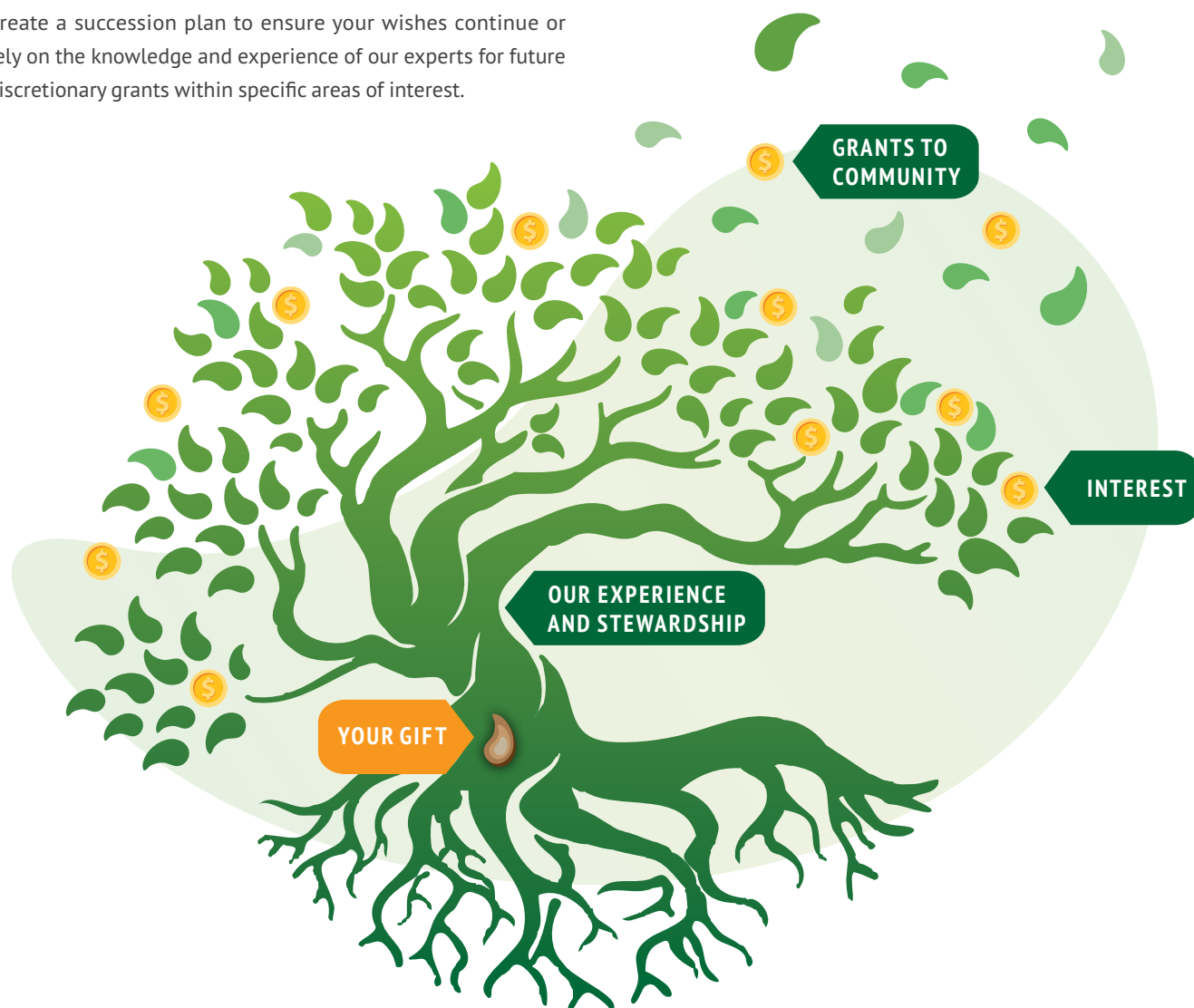
Your initial gift is the beginning of a powerful investment into the community impact process. Many fundholders with the Foundation continue to contribute to their fund on a regular basis.

Your endowment or other gifts can provide a simple way to carry out your annual charitable contributions. We have multiple ways to assist you as you contribute to the fund at any time with gifts of cash or other available instruments.

Support the causes that are important to you through the annual grants from the fund.

Create a succession plan to ensure your wishes continue or rely on the knowledge and experience of our experts for future discretionary grants within specific areas of interest.

You can bank on our reputation, experience, flexibility, and cost effectiveness. Together, we build a stronger, more caring community.



Getting Started

Caring and Trustworthy Investing

Your gift is as individual as you are. It reflects your values and hopes for the community.

Because we understand the personal commitment you are making, we offer a range of giving options to help you give with confidence. We know this is all about making the most of your wishes while making our community a better place.

Here are some questions to consider as you get started:

- Do you want to give now or do you want to make a gift later through your estate?
- If you prefer to give now, would you like to be involved in granting decisions or would you prefer to have others decide based on your wishes?
- Would you prefer to give to a specific charity or charities or would you rather have your gift used for the most pressing needs in the community?
- If you prefer to give to specific charities, do you know the organizations and causes you want to give to or do you need more information to help you decide?

You can start your own fund dedicated to a cause of your choice – or you may choose to give where the needs are greatest through our various community-focused programs such as the Smart & Caring Community Fund.

“

Good and positive change can and will happen.”

– Bryan Born, President of Columbia Bible College

What to Support

Create a New Named Endowment Fund

An individual, family or organization can create a named endowment fund. The first step is to determine what kind of fund you wish to create based on what you wish to support. You can choose from the following:



Donor Advised Endowment Funds

Donor Advised Funds (DAF) allow you to make annual grant recommendations to the charity or charities of your choice. Each year, the donor chooses which cause the investment earnings on their endowment will go to. It is a tailored option for those looking to spread their gifts among many great options.



Donor Designated Endowment Funds

Donor Designated Endowment Funds are similar to the above DAF, but when the fund is initially set up, the recipient of the gift is chosen. While the DAF allows you to support a different charity each year, this type of Fund ensures that the causes you choose are funded well into the future as the money is consistently given to them on an annual basis.



Field of Interest Funds

You may wish fund a scholarship or bursary or general student award for a graduating high school student in Abbotsford. The Abbotsford Community Foundation will help you create this award and you will be given the opportunity to hand out the award at the student's graduation ceremony.



Student Award Funds

You may wish fund a scholarship or bursary or general student award for a graduating high school student in Abbotsford. The Abbotsford Community Foundation will help you create this award and you will be given the opportunity to hand out the award at the student's graduation ceremony.



Agency Funds

An Agency Fund is a permanent endowment, which provides an annual source of revenue to be used at the discretion of the charitable organization that established it. Its purpose is to support sustainability or maintain charitable programming (including educational awards) consistent with the agency's mission.

Support Existing Endowment Funds

The Foundation has established several special funds which the community can support. There is no minimum donation. Below is a list of those opportunities:



Smart and Caring Community Fund

This community fund provides income for ACF's annual community grants and any amount can be donated to this fund to help ACF address community priorities. Anyone interested in establishing an endowment fund to support Abbotsford at large are encouraged to create a fund under the umbrella of the Smart and Caring Community Fund where the income from their named fund will be added to the income from this fund. In this way the donor is assured that the income is being used for the community's priority needs.



ACF Housing Fund

Homelessness continues to be an important issue in Abbotsford. The ACF Housing Fund was established to provide support to organizations who provide meaningful assistance to the homeless in our community.



ACF Student Awards Fund

The Abbotsford Community Foundation also gives out our own scholarships to graduating high school students. In addition to good academic performance and financial need, ACF is also looking to support students who have given back to their community.



Flow Through Student Awards

If you are interested in funding an annual student award by providing the award amount each year you can do so if you can commit to doing this for a minimum of three years. The minimum award amount is \$1,000. A 15% fee is charged to administer this service on your behalf.

Ways to Give

Make an Online Gift

Visit our secure online donation form at www.abbotsfordcf.org.

In Memoriam and Tribute Gifts

Donations can be made in memory of a loved one or in honour of a loved one on a birthday or special occasion.

A Gift In Your Will

You can designate a gift or portion of your estate to the Abbotsford Community Foundation.

Life Insurance Policy

You can designate the community foundation to receive all of the proceeds from your life insurance and receive a tax receipt for the value of your premiums. Or you can transfer the policy to the Foundation's name and receive an immediate tax receipt for the cash surrender value.

Appreciated Securities

Donors who gift appreciated securities can reduce capital gains to zero and still have an income tax receipt to offset taxes on other income.

Gifts of Real Property

Individuals may donate their home or other real estate. You can also donate your house and receive a tax credit and be able to continue living in your house for as long as you want.

RRSP and RIFF

You can designate Abbotsford Community Foundation as your beneficiary for your RRSP or RIFF accounts.

Transfer of a Private Foundation

A private foundation or Charitable Trust can be transferred to the Abbotsford Community Foundation, while retaining its identity and purpose.

What's Your Story?

Whether your family moved here five years ago or one hundred years ago, you have a story about how you and your family came here and why. Your story tells us what's important to you and your family. It tells us what you value and how your lives reflect those values.

The Abbotsford Legacy Stories Program offers you and your family an opportunity to leave both a financial and a historical legacy to your community. The program works when donors like you promise to leave a bequest to a new or existing fund held by the Abbotsford Community Foundation. The fund can be one of our student awards or our Smart & Caring Community Fund, which grants out an average of more than \$100,000 annually to various local charities. Once you've agreed to invest in your community in this way, we'll provide you with a writer who will interview you about your family's story, which will then be kept and preserved in a leather bound book at The Reach Gallery in Abbotsford.

There is no cost to participate and you will also receive a copy of your family's story to share with generations to come.

For more information, please see our website or our What's Your Story brochure or contact us directly to speak with our Executive Director.



Together we build a stronger, more caring community.

Cover photo: Vijay Manuel

Abbotsford Community Foundation

201 - 2890 Garden Street, Abbotsford, BC V2T 4W7

Tel: 604-850-3755 • Fax: 604-850-2527

Charitable Registration No. 88849 9241 RR0001

www.abbotsfordcf.org    



ABBOTSFORD
COMMUNITY
FOUNDATION